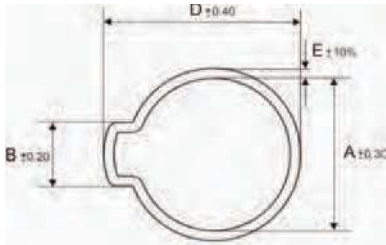


# Ear Clips Series 74

## Single Ear



### Mild Steel Zinc Plated

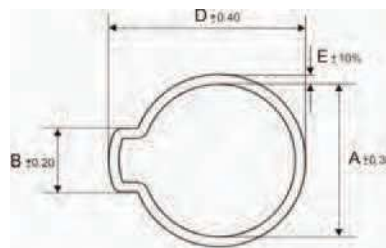


Klump part	Size range	A (mm)	B (mm)	C (mm)	D (mm)	E (mm)	Box qty
C740070-009	7-9	9.3	5.5	6.0	13.0	0.8	100
C740080-010	8-10	10.3	6.0	6.0	14.0	0.8	100
C740090-011	9-11	11.3	6.5	6.5	15.0	0.8	100
C740100-012	10-12	12.3	7.0	6.5	16.0	0.8	100
C740110-013	11-13	13.3	7.5	6.5	17.0	0.9	100
C740120-014	12-14	14.3	8.0	7.0	18.5	1.0	100
C740140-016	14-16	16.3	8.5	7.0	20.5	1.1	100
C740160-018	16-18	18.5	9.5	7.0	23.0	1.2	100

### Series C74

Manufactured according to:  
DIN 2393 C Rst  
34-2-GBK.

Material:  
W1 Mild steel  
Chrome free zinc plated.  
Minimum thickness 8-10  
microns.



### Stainless Steel



E740070-009	7-9	9.3	5.5	6.0	13.0	0.8	50
E740080-010	8-10	10.3	6.0	6.0	14.0	0.8	50
E740090-011	9-11	11.3	6.5	6.5	15.0	0.8	50
E740100-012	10-12	12.3	7.0	6.5	16.0	0.8	50
E740110-013	11-13	13.3	7.5	6.5	17.0	0.8	50
E740120-014	12-14	14.3	8.0	7.0	18.5	1.0	50
E740130-015	13-15	15.3	8.0	7.0	19.5	1.0	50
E740140-016	14-16	16.3	8.5	7.0	20.5	1.0	50
E740150-017	15-17	17.5	9.0	7.0	22.0	1.0	50
E740160-018	16-18	18.5	9.0	7.0	23.0	1.0	50
E740170-019	17-19	19.5	9.5	7.5	24.0	1.0	50
E740180-020	18-20	20.5	10.0	7.5	25.0	1.0	50

### Series E74

Manufactured according to:  
DIN 2463.

Material:  
W4 Stainless steel AISI 304.

