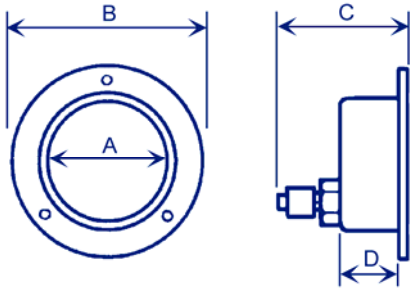


PRESSURE GAUGES



BEFF



FRONT FLANGED STEEL CASED

Part No BEFF FLUSH MOUNTED WITH BOTTOM BACK CONNECTION

A DIAL SIZE	63	80	100	150
B	90	105	134	185
C	56	60	73	73
D	22.5	22.5	33	33
CONNECTION BSP	1/4	1/4	3/8	3/8

A good quality and robust general purpose pressure gauge. Suitable for a wide range of applications where the fluid used is not aggressive to copper alloys.

These gauges can be supplied with certification that confirms conformity to BS EN 837-1 :1998 (formally BS 1780) Accuracy Class 1.6

It is recommended that the pressure range should be chosen so that the working pressure is not more than 65% of the maximum scale value for fluctuating pressures or 75% for steady pressures.

Although primarily suited for use on air and water, if used on steam a suitable ring or u-syphon should be fitted and filled with water prior to use to prevent steam entering the gauge.

Features & Benefits

- Can be supplied with certification to BS EN 837-1 :1998 (formally BS 1780) Accuracy Class 1.6.
- Suitable for various duties.
- Economical & reliable.
- Supplied with dual scale dial as standard.

Pressure & Temperature

Pressure range:-
See table below

Temperature range:-
0 to 60°C

MATERIALS

Case	Steel
Wetted Parts	Brass
Bezel	Brass Chrome Plated
Window (63mm to 80mm)	Clear Polymer
Window (100mm to 150mm)	Glass

STANDARD PRESSURE RANGES AVAILABLE

Vacuum & Compound	0 to 30" Hg Vac (-1 Bar)	30" Hg Vac (-1 Bar) to 15 PSI (1 Bar)	30" Hg Vac (-1 Bar) to 30 PSI (2 Bar)	30" Hg Vac (-1 Bar) to 60 PSI (4 Bar)
	30" Hg Vac (-1 Bar) to 100 PSI (7 Bar)	30" Hg Vac (-1 Bar) to 160 PSI (10 Bar)	30" Hg Vac (-1 Bar) to 200 PSI (14 Bar)	30" Hg Vac (-1 Bar) to 300 PSI (20 Bar)
Pressure	0 to 15 PSI (1 Bar)	0 to 30 PSI (2 Bar)	0 to 60 PSI (4 Bar)	0 to 100 PSI (7 Bar)
	0 to 160 PSI (10 Bar)	0 to 200 PSI (14 Bar)	0 to 300 PSI (20 Bar)	0 to 400 PSI (27 Bar)
	0 to 600 PSI (41 Bar)	0 to 1000 PSI (70 Bar)	0 to 1600 PSI (100 Bar)	0 to 2000 PSI (140 Bar)
	0 to 3000 PSI (210 Bar)	0 to 4000 PSI (270 Bar)	0 to 6000 PSI (410 Bar)	0 to 10000 PSI (700 Bar)