

**JV231001**  
**Universal Direct Mount**  
**3/2 & 5/2**  
**Solenoid Operated**  
**Spool Valve**  
**NAMUR Interface**



The JV231001 solenoid operated spool valve has threaded port connections and a NAMUR interface and can be easily adapted to a 3/2 function for controlling a spring-return single-acting actuator or to a 5/2 functions for controlling a double-acting actuator.

**Approvals, Features & Benefits**

- 5/2 - 3/2 interchangeable
- Various voltage options
- Manual over-ride control
- Life cycle of 12,000,000 operations
- IP65 rating

**Pressure & Temperature**

Pressure range :-  
1.5 to 8 Bar

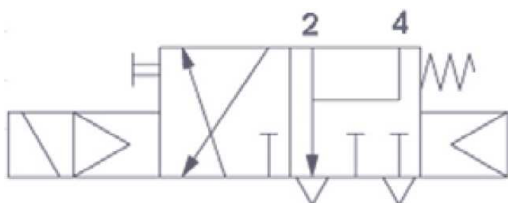
Temperature range:-  
-20°C to 60°C

	F	L	M	N	O	P	Q	R	S	T	W	Ports 1,3,5	Ports 2,4
	27	28	24	32	40	68.5	40.5	17.5	45	40	135	1/4 BSP	NAMUR
<b>Voltage</b>	12VDC • 24VDC • 24VAC • 110VAC • 230VAC												
<b>Weight Kg</b>	0.40												

**MATERIALS**

<b>Valve Body</b>	Aluminium Alloy
<b>Spool</b>	Aluminium Alloy
<b>O-rings</b>	NBR

**3/2 Way (Spring Return Actuators)**



**5/2 Way (Double Acting Actuators)**

